



# IntelliPak™ I

Commercial packaged rooftop units



# Delivering industry-leading efficiency to meet today's business demand



IntelliPak I rooftop units are ideal for a broad range of applications, such as large office buildings, restaurants, retail centers and industrial facilities, as well as institutional buildings used for healthcare and education.

In today's business world, efficiency is everything. There's never been more pressure to squeeze every drop of value out of every dollar invested in raw materials, supplies, transportation, human resources, energy and more.

When it comes to getting the most out of your rooftop air conditioning unit investment, IntelliPak™ I systems lead the industry. Intelligent design creates lower installed costs. Excellent energy efficiency means lower operating costs. Ease of maintenance and legendary Trane® toughness deliver peak performance for decades.

The more you learn about IntelliPak I rooftop units, the more you'll see why they're the smart choice for performance, efficiency and lifetime value.

Most units feature an Energy Efficiency Ratio (EER) rating of 11 or more—the highest rating in the industry on standard product. The entire IntelliPak I package—not just parts of it—is AHRI certified.\* With configuration options to fit most project cost targets, IntelliPak I systems provide the best combination of value and performance.

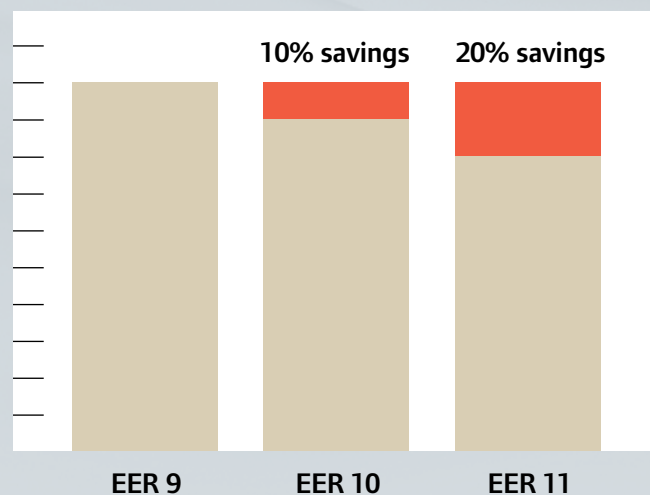
\*Up to 63 tons.



## What is EER?

The Energy Efficiency Ratio is a measure of an air conditioner's cooling power compared to electrical usage. An EER of 11 means the system is 10% more efficient than the government standard (10 EER). **Some IntelliPak I rooftop unit configurations are as high as 14.2 EER.**

### ENERGY USED

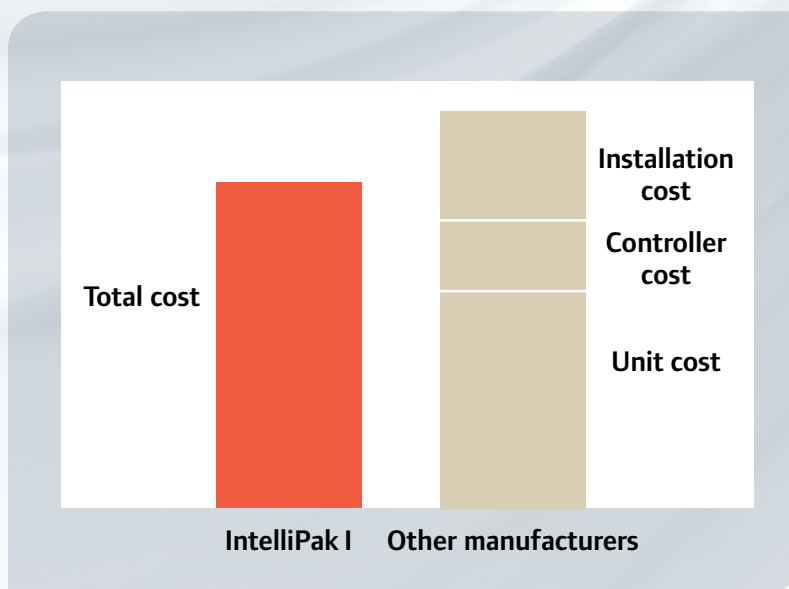




## Comprehensive integration at the factory creates low installed costs

While energy efficiency cuts costs over the long run, low installed costs save you money on day one. Trane does both. We engineered IntelliPak I rooftop units to work right out of the box. We install and integrate everything—including controls—at the factory. You don't have to pay for hardware, software or manpower to do it at your site. It's just a matter of placing the unit, connecting everything, using the preinstalled controls, and it's up and running.

You save even more when the IntelliPak I system is used to replace existing IntelliPak system equipment. New units have the same footprint as legacy models, meaning they'll fit on the same curb and plug seamlessly into the current building infrastructure.

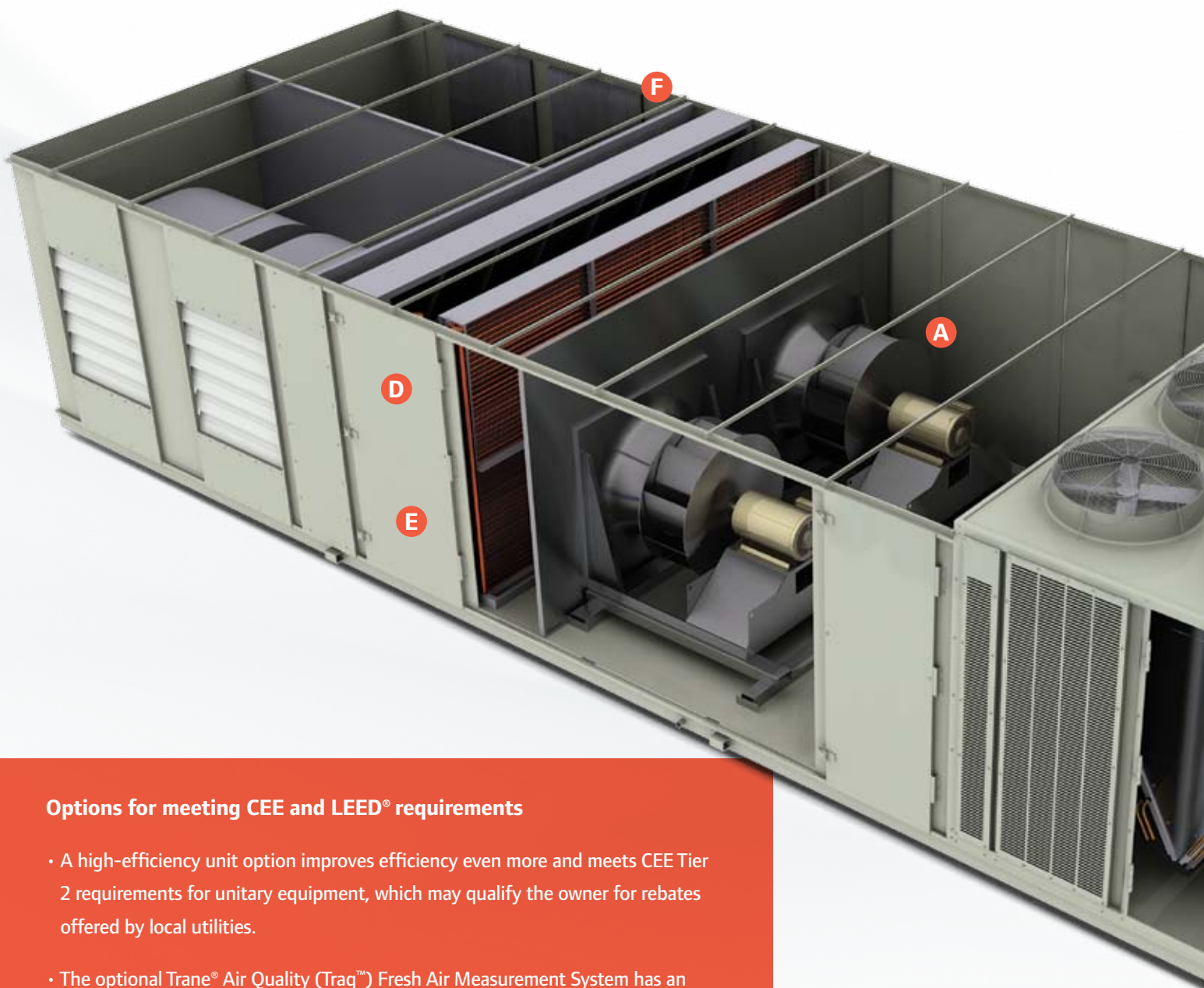


## Why IntelliPak I rooftop units?

- Industry-leading efficiency without sacrificing comfort
- 11 EER on most products, with some configurations as high as 14.2 EER
- Entire IntelliPak I package (up to 63 tons) AHRI certified
- Ready to go right out of the box; creates low installed cost
- Trane® eDrive™ direct-drive plenum fan technology
- Trane® eFlex™ variable-speed compressor technology
- Unbeatable combination of efficiency and reliability with quiet operation
- Factory-installed state-of-the-art controls
- Ease of service with our unit-mounted Human Interface panel
- Single-source responsibility—design, build, install, service—make one call to Trane for any service or support needs
- Our reputation for extreme durability created by building units that routinely last 20 to 30 years

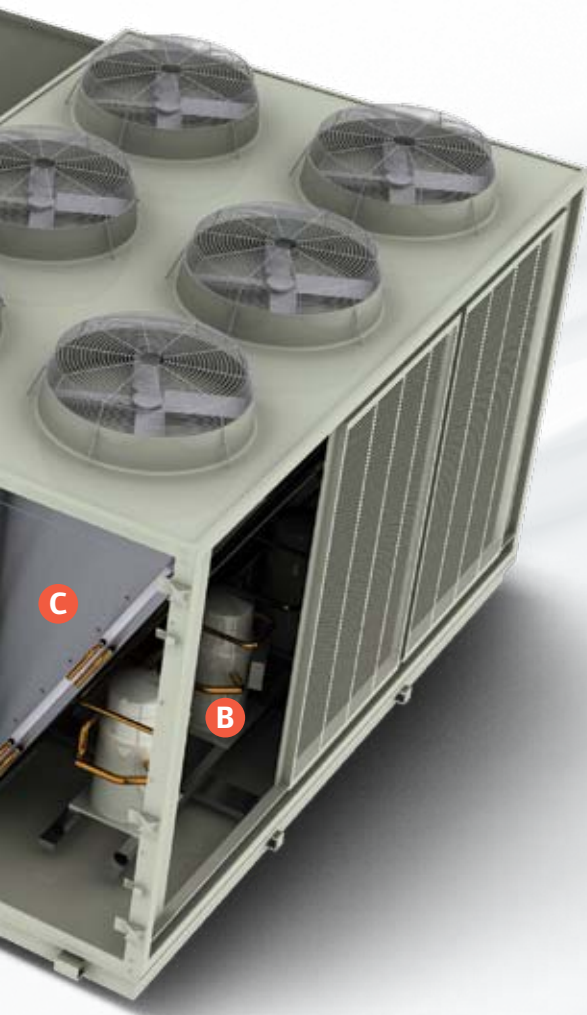
# Efficiency and reliability through innovation

Through a combination of innovative technologies and expert engineering, Trane® IntelliPak™ I systems run efficiently, quietly and reliably—lowering your operating costs and reducing the hassle of unplanned maintenance. And because of our commitment to quality manufacturing, units can last as long as 20 to 30 years.



## Options for meeting CEE and LEED® requirements

- A high-efficiency unit option improves efficiency even more and meets CEE Tier 2 requirements for unitary equipment, which may qualify the owner for rebates offered by local utilities.
- The optional Trane® Air Quality (TraQ™) Fresh Air Measurement System has an accuracy of +/- 15%, which meets requirements of LEED IE Q Credit 1.
- Microchannel condenser coils allow all units to meet LEED EA Credit 4.



**A** **Trane<sup>®</sup> eDrive<sup>™</sup> direct drive plenum fan technology**

Our eDrive direct drive plenum fan is unique to the category and saves energy, extends filter life and operates more quietly than competing units. The fan is up to 20 percent more efficient than traditional forward-curved fans, and the beltless design eliminates the maintenance hassles of belt failure and filters clogged with microscopic belt particles.

Note: Only units 60 tons and above have two fans.

**B** **Trane<sup>®</sup> eFlex<sup>™</sup> variable-speed compressor technology**

The optional eFlex variable-speed compressor ensures your HVAC system runs efficiently at all load levels, not just at the upper extremes. The result is high EER (which measures efficiency at peak output) and extremely high Integrated Energy Efficiency Ratio (IEER, a measurement of efficiency at variable workloads). We've replaced traditional digital scroll technology with industry-leading variable speed technology to ensure the unit exactly matches the load required.

**C** **All-Aluminum Microchannel (MCHE) condenser coil**

This more environmentally friendly compressor coil features improved durability and reliability. A recessed design protects fins from incidental damage. Increased coil rigidity enhances durability. The coil's design dramatically reduces the risk of leaks and all-aluminum construction minimizes corrosion and eliminates formicary corrosion. Optional coil coating can further safeguard against corrosion. The coil also uses less refrigerant, making it more environmentally friendly and meeting LEED EA Credit 4.

**D** 2-inch standard efficiency throwaway filters on 20- to 89-ton units and 2-inch high efficiency throwaway filters on 90- to 130-ton units.

**E** Can accommodate MERV 14 filters.

**F** Double-wall construction.

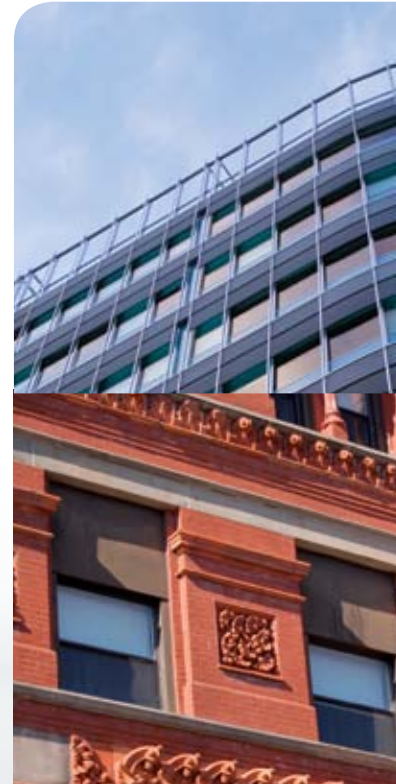
**Additional options:**

- Single-zone VAV
- Building pressure control
- Return and exhaust fans
- LON/BACNet communications

Scan the code to watch a video highlighting IntelliPak I units from Trane.



# Trust Trane for end-to-end service and support



## Factory-installed controls

Each IntelliPak™ I rooftop unit is equipped with a state-of-the-art direct digital Unit Control Module (UCM) that's installed at the factory and works right out of the box at your location. Basic components of the UCM are the rooftop module, single or multiple compressor module and the Human Interface panel. This pre-configured, factory-installed and commissioned UCM is a highly integrated product that provides accurate and reliable control and equipment protection.

## Streamlined service

Access to unit controls via a Human Interface panel provides a high degree of control, superior monitoring capability and unmatched diagnostic information. That helps cut troubleshooting time, which can lower service costs. The panel also identifies any malfunctioning sensor, eliminating the time-consuming and costly process of physically checking each individual sensor.



### **Building Information Modeling**

Trane has the Building Information Modeling (BIM) objects to support your building design.

Trane® BIM objects represent your exact specification. Our objects are pre-populated with data unique to each product configuration, saving time, increasing accuracy and improving how buildings are constructed.

### **Building life. Together.**

The success of your project—be it a new building or a renovation—requires the expertise and hard work of hundreds of individuals. The HVAC professionals at Trane are committed to helping you design, engineer, install and maintain the ideal system for your specific application. With Trane, you have a single source for all your HVAC needs.

**Every building is unique. The experts at Trane are committed to analyzing your needs, using our expertise and experience to create the ideal HVAC system and providing customer-first service throughout the life of your building.**

Visit [Trane.com/IPAK1](http://Trane.com/IPAK1) for detailed information on IntelliPak I rooftop units and our complete line of packaged rooftop systems or contact your local Trane representative to learn more.

Scan the code  
to learn more  
about IntelliPak I  
units from Trane.



Ingersoll Rand (NYSE:IR) advances the quality of life by creating and sustaining safe, comfortable and efficient environments. Our people and our family of brands—including Club Car®, Ingersoll Rand®, Schlage®, Thermo King® and Trane®—work together to enhance the quality and comfort of air in homes and buildings; transport and protect food and perishables; secure homes and commercial properties; and increase industrial productivity and efficiency. We are a \$14 billion global business committed to a world of sustainable progress and enduring results.



[ingersollrand.com](http://ingersollrand.com)